

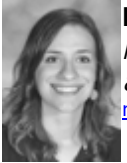


## FACULTY/STAFF 2009-2010

### B



**Baron, Ivonne**  
*Middle and Upper School Spanish*  
847.695.0309, ext. 405  
[ibaron@elginacademy.org](mailto:ibaron@elginacademy.org)



**Bayer, Mary**  
*Middle and Upper School Theater*  
847.695.0309, ext. 241  
[mbayer@elginacademy.org](mailto:mbayer@elginacademy.org)



**Bazos, Karen**  
*3rd Grade*  
847.695.0309, ext. 400  
[kbazos@elginacademy.org](mailto:kbazos@elginacademy.org)



**Biskup, Debbie**  
*Early Childhood Assistant  
and Extended Day*  
847.695.0309, ext. 401



**Boborci, Courtney**  
*1st Grade*  
847.695.0309, ext. 446  
[cboborci@elginacademy.org](mailto:cboborci@elginacademy.org)



**Bolz, Donna**  
*4th Grade*  
847.695.0309, ext. 402  
[dbolz@elginacademy.org](mailto:dbolz@elginacademy.org)



**Bowen, Tomi**  
*Middle School Visual Arts*  
847.695.0309, ext. 404  
[tbowen@elginacademy.org](mailto:tbowen@elginacademy.org)

### C



**Cannon, Heather**  
*Lower and Middle School French*  
847.695-0309, ext. 449  
[hcannon@elginacademy.org](mailto:hcannon@elginacademy.org)



**Ceci, Suzy**  
*Early Childhood, Lower School, Middle School  
French and Spanish*  
847.695.0309, ext. 455  
[sceci@elginacademy.org](mailto:sceci@elginacademy.org)



**Cinquemani, Marie**  
*Middle and Upper School Music*  
847.695.0309, ext. 418  
[mcinquemani@elginacademy.org](mailto:mcinquemani@elginacademy.org)

**Sorry,  
photo  
not  
available**

**Cintron, Rick**  
*Maintenance*  
847.695.0309, ext. 260



**Collins, Linley**  
*1st Grade*  
847.695.0309, ext. 467  
[llcollins@elginacademy.org](mailto:llcollins@elginacademy.org)



**Comer-Rabaza, Diane**  
*Lower and Middle School Physical Education*  
847.695.0309, ext. 408  
[dcomer@elginacademy.org](mailto:dcomer@elginacademy.org)



**Cooper, Dr. John W.**  
*Head of School*  
847.695.0300, ext. 220  
[jcooper@elginacademy.org](mailto:jcooper@elginacademy.org) or  
[schoolhead@elginacademy.org](mailto:schoolhead@elginacademy.org)



**Cottone, Siobhan**  
*Assistant Director of Development*  
847.695.0309, ext. 256  
[scottone@elginacademy.org](mailto:scottone@elginacademy.org)

---

**D**

**Dugan, Melissa**  
*Middle School Dean of Students, Social Studies/P.E.*  
847.695.0309, ext. 265  
[mdugan@elginacademy.org](mailto:mdugan@elginacademy.org)

---

**E**

**Egan, Tim**  
*Upper School Social Studies and Spanish*  
847.695.0309, ext. 436  
[tegan@elginacademy.org](mailto:tegan@elginacademy.org)



**Eikleberry, Judy**  
*Early Childhood Teacher*  
847.695.0309, ext. 468  
[jeikleberry@elginacademy.org](mailto:jeikleberry@elginacademy.org)



**Elsenbroek, Evonne**  
*Library & P.E. Assistant, Extended Care*  
847.695.0309, ext. 214  
[eelsenbroek@elginacademy.org](mailto:eelsenbroek@elginacademy.org)

---

**F**

**Fadel, Marilyn**  
*2nd Grade*  
847.695.0309, ext. 413  
[mfadel@elginacademy.org](mailto:mfadel@elginacademy.org)



**Fleener, John**  
*Middle and Upper School Videography*  
847.695.0309, ext. 469  
[jfleener@elginacademy.org](mailto:jfleener@elginacademy.org)



**Fletcher, Fred**  
*Upper School Mathematics*  
847.695.0309, ext. 415  
[ffletcher@elginacademy.org](mailto:ffletcher@elginacademy.org)

---

**G**

**Ghadiali, Alifiyah**  
*Middle School Mathematics/Computers*  
847.695.0309, ext. 410  
[aghadiali@elginacademy.org](mailto:aghadiali@elginacademy.org)



**Giebel, Heather**  
*Early Childhood, Lower School, and Middle School Music*  
847.695.0309, ext. 459  
[hgiebel@elginacademy.org](mailto:hgiebel@elginacademy.org)



**Gigounas, Ellen**  
*2nd Grade*  
847.695.0309, ext. 442  
[egigounas@elginacademy.org](mailto:egigounas@elginacademy.org)



**Gould, Harry**  
*Lower School Director, (Grades K-4)*  
847.695.0309, ext. 237  
[hgould@elginacademy.org](mailto:hgould@elginacademy.org)

---

**H**

**Hanford, Seth**  
*Director, Upper School  
Assistant Head of School*  
847.695.0309, ext. 216  
[shanford@elginacademy.org](mailto:shanford@elginacademy.org)



**Hannert, Mary**  
*Early Childhood Program Director, Preschool,  
Pre-Kindergarten*  
847.695.0309, ext. 255  
[mhannert@elginacademy.org](mailto:mhannert@elginacademy.org)



**Harris, Bill**  
*Middle School Science and Physical Education*  
847.695.0309, ext. 420  
[bharris@elginacademy.org](mailto:bharris@elginacademy.org)



**Hawkins, Hadley**  
*Middle School Math, Language Arts, Social Studies*  
847.695.0309, ext. 412  
[hhawkins@elginacademy.org](mailto:hhawkins@elginacademy.org)



**Hering, Frank**  
*Upper School English*  
 847.695.0309, ext. 421  
[fhering@elginacademy.org](mailto:fhering@elginacademy.org)



**Hilsabeck, Steve**  
*Upper School Social Studies and English*  
 847.695.0309, ext. 417  
[shilsabeck@elginacademy.org](mailto:shilsabeck@elginacademy.org)



**Howell, Shannon**  
*Director, Admission, Marketing and Financial Aid*  
 847.695.0309, ext. 243  
[showell@elginacademy.org](mailto:showell@elginacademy.org)

I



**Ikezoe, Jay**  
*Business Office*  
 847.695.0309, ext. 204  
[jikezoe@elginacademy.org](mailto:jikezoe@elginacademy.org)

J



**Janik, Julie**  
*Middle School Social Studies, Theater, Computers*  
 847.695.0309, ext. 461  
[jjanik@elginacademy.org](mailto:jjanik@elginacademy.org)



**John, Denise**  
*Early Childhood Teacher*  
 847.695.0309, ext. 423  
[djohn@elginacademy.org](mailto:djohn@elginacademy.org)

K



**Karavitis, Kathy**  
*Middle School Math / Language Arts / Social Studies*  
 847.695.0309, ext. 422  
[kkaravitis@elginacademy.org](mailto:kkaravitis@elginacademy.org)



**Kemmler, Lori**  
*Kindergarten Teacher*  
 847.695.0309, ext. 424  
[lkemmler@elginacademy.org](mailto:lkemmler@elginacademy.org)



**Kennedy, Susan**  
*Head of School's Office*  
 847.695.0300, ext. 201  
[skennedy@elginacademy.org](mailto:skennedy@elginacademy.org)

Sorry,  
photo  
not  
available

**Kenney, Nancy**  
*Early Childhood and Lower School Visual Arts*  
 847.695.0309, ext. 460  
[nkenney@elginacademy.org](mailto:nkenney@elginacademy.org)



**Kidston, Jim**  
*Technology Director*  
 847.695.0309, ext. 219  
[jkidston@elginacademy.org](mailto:jkidston@elginacademy.org)



**Kietzmann, Gina**  
*Upper School Mathematics*  
 847.695.0309, ext. 425  
[gkietzmann@elginacademy.org](mailto:gkietzmann@elginacademy.org)

Sorry,  
photo  
not  
available

**Kolba, Andrew**  
*Maintenance*  
 847.695.0309, ext. 462  
[akolba@elginacademy.org](mailto:akolba@elginacademy.org)

Sorry,  
photo  
not  
available

**Kolba, Jim**  
*Maintenance Manager*  
 847.695.0309, ext. 236  
[jkolba@elginacademy.org](mailto:jkolba@elginacademy.org)



**Kuzyk, Debbie**  
*Early Childhood Teacher*  
 847.695.0309, ext. 427  
[dkuzyk@elginacademy.org](mailto:dkuzyk@elginacademy.org)

L



**Lafrenz, Dianna**  
*Early Childhood Assistant/Extended Care*  
 847.695.0309, ext. 403  
[dlafrenz@elginacademy.org](mailto:dlafrenz@elginacademy.org)



**Leslie, Kristy**  
*Athletic Director / Upper School Visual Arts*  
 847.695.0309, ext. 222  
[kross@elginacademy.org](mailto:kross@elginacademy.org)



**Lloyd, Sue Morton '66**  
*Development and Alumni Office*  
 847.695.0309, ext. 209  
[slloyd@elginacademy.org](mailto:slloyd@elginacademy.org) or [alumni@elginacademy.org](mailto:alumni@elginacademy.org)

---

**M**

**Martin, Lynn**  
*Upper School Office/Registrar*  
847.695.0301  
[lmartin@elginacademy.org](mailto:lmartin@elginacademy.org)



**Merrill, Stephanie**  
*Upper School English*  
847.695.0309, ext. 429  
[smerrill@elginacademy.org](mailto:smerrill@elginacademy.org)



**Metcalf, Kara**  
*Associate Director, Admissions and Marketing*  
847.695.0309, ext. 262  
[kmetcalf@elginacademy.org](mailto:kmetcalf@elginacademy.org)

---

**N**

**Nabor, Roberta**  
*Upper School Science*  
847.695.0309, ext. 430  
[bnabor@elginacademy.org](mailto:bnabor@elginacademy.org)



**Nasser, Mariam**  
*3rd Grade*  
847.695.0309, ext. 431  
[mnasser@elginacademy.org](mailto:mnasser@elginacademy.org)



**Nation, Barbara**  
*Middle School Science*  
847.695.0309, ext. 432  
[bnation@elginacademy.org](mailto:bnation@elginacademy.org)



**Nichols, Jamie**  
*Upper School Science*  
847.695.0309, ext. 434  
[jnichols@elginacademy.org](mailto:jnichols@elginacademy.org)

---

**O**

**O'Keeffe, Gerald**  
*Director of Finance and Operations*  
847.695.0309, ext. 240  
[gokeeffe@elginacademy.org](mailto:gokeeffe@elginacademy.org)



**O'Neill, Ann**  
*Upper School Mathematics*  
847.695.0309, ext. 433  
[aoneill@elginacademy.org](mailto:aoneill@elginacademy.org)

---

**P**

Sorry,  
photo  
not  
available

**Pepa, Danielle**  
*Database Specialist*  
847.695.0309, ext. 2593  
[dpepa@elginacademy.org](mailto:dpepa@elginacademy.org)

---

**R**

**Revak, Sandy**  
*Middle School Director, (Grades 5-8)*  
847.695.0309, ext. 247  
[srevak@elginacademy.org](mailto:srevak@elginacademy.org)



**Roebuck, Lyle**  
*Middle and Upper School Classics*  
847.695.0309, ext. 426  
[lroebuck@elginacademy.org](mailto:lroebuck@elginacademy.org)



**Rusniak, Kathy**  
*Upper School Spanish*  
847.695.0309, ext. 443  
[krusniak@elginacademy.org](mailto:krusniak@elginacademy.org)

---

**S****Schick, Lynne**

*Library/Media Center Director*  
847.695.0309, ext. 230  
[lschick@elginacademy.org](mailto:lschick@elginacademy.org)

**Schmidt, Dawn**

*PS-4 Office*  
847.695.0315, ext. 206  
[dschmidt@elginacademy.org](mailto:dschmidt@elginacademy.org)

Sorry,  
photo  
not  
available

**Schock, Jane**

*Maintenance*  
847.695.0309, ext. 457

**Schulz, Sue**

*1st Grade*  
847.695.0309, ext. 440  
[sschulz@elginacademy.org](mailto:sschulz@elginacademy.org)

**Schumacher, Mary Ann**

*Admission Associate/Web Designer*  
847.695.0303, ext. 202  
[admissions@elginacademy.org](mailto:admissions@elginacademy.org) or  
[mschumacher@elginacademy.org](mailto:mschumacher@elginacademy.org)

**Shatkus, Sharon**

*Middle School Office*  
847.695.0302, ext. 205  
[sshatkus@elginacademy.org](mailto:sshatkus@elginacademy.org)

**Stanbury, Geoff**

*Middle School English*  
847.695.0309, ext. 463  
[gstanbury@elginacademy.org](mailto:gstanbury@elginacademy.org)

**Stuart, Joseph**

*Upper School Visual Arts*  
847.695.0309, ext. 232  
[jstuart@elginacademy.org](mailto:jstuart@elginacademy.org)

**Suitts, Elaine**

*Business Office Assistant and Student Billing Coordinator*  
847.695.0309, ext. 203  
[esuitts@elginacademy.org](mailto:esuitts@elginacademy.org)

**Sweeney, Michelle**

*Assistant Kindergarten Teacher*  
847.695.0309, ext. 206  
[msweeney@elginacademy.org](mailto:msweeney@elginacademy.org)

---

**T****Taylor, Melinda**

*Middle School Math and Humanities*  
847.695.0309, ext. 441  
[mtaylor@elginacademy.org](mailto:mtaylor@elginacademy.org)

**Thomas, Vince**

*Upper School Dean of Students*  
847.695.0309, ext. 218  
[vthomas@elginacademy.org](mailto:vthomas@elginacademy.org)

---

**V****Veltri, Peggy**

*Middle School Language Arts / Computers*  
847.695.0309, 447  
[pveltri@elginacademy.org](mailto:pveltri@elginacademy.org)

**Vincent, Terry**

*Middle and Upper School French*  
847.695.0309, ext. 458  
[tvincent@elginacademy.org](mailto:tvincent@elginacademy.org)

**Vogt, David**

*Assistant Athletic Director/Middle School P.E.*  
847.695.0309, ext. 251  
[dvogt@elginacademy.org](mailto:dvogt@elginacademy.org)

---

**W****Webel, Marilyn**

*Accounts Payable/Payroll, Business Office*

847.695.0303, ext. 263

[mwebel@elginacademy.org](mailto:mwebel@elginacademy.org)

**Weinhart, Elaine**

*Early Childhood Assistant*

847.695.0309, ext. 464

[eweinhart@elginacademy.org](mailto:eweinhart@elginacademy.org)

**Weinrich, Cherie**

*Early Childhood Assistant/Extended Care*

847.695.0309, ext. 465

[cweinrich@elginacademy.org](mailto:cweinrich@elginacademy.org)

**Wilke, Christina**

*Kindergarten*

847.695.0309, ext. 428

[cwilke@elginacademy.org](mailto:cwilke@elginacademy.org)

**Williams, Sharon**

*College Counseling / Upper School Social Studies*

847.695.0309, ext. 246

[swilliams@elginacademy.org](mailto:swilliams@elginacademy.org)

---